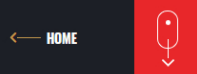




# FORGED INCONEL FLANGES STAINLESS STEEL

COMMITTED FOR WORLD CLASS QUALITATIVE FORGED INCONEL FLANGES STAINLESS STEEL MANUFACTURING.....



## ABOUT FORGED INCONEL FLANGES STAINLESS STEEL

Jubilant Piping Solution PVT. LTD is a notable manufacture & exporter Forged Flanges. We manufacture in accordance with national and international quality standards in different sizes, specifications, types, dimensions, grades, etc. We also supply these in various customized specifications as per the requirements of our client's at the most reasonable prices.

We supply these Forged Flanges in various ferrous and non-ferrous materials like stainless steel, carbon steel, duplex and super duplex steel, alloy steel, high nickel alloys and many other materials.

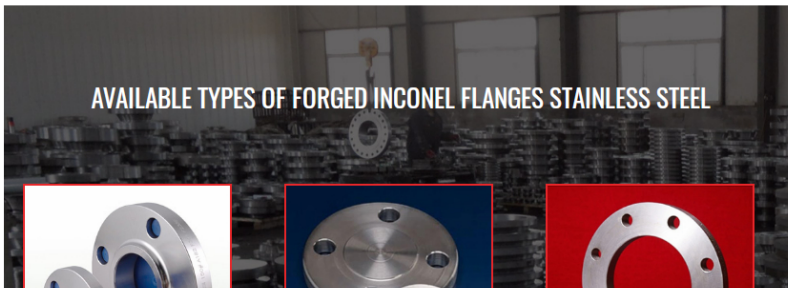
Forged flanges are used as a connection component for pipes, valves, pumps and other equipment to form a pipework system. Forged flanges provide easy access for cleaning, inspection, modification or repairs. Our Forged flanges are available in pressure ratings from 150 – 2500 psi for ASME & PN6-PN400 for DIN / EN flanges. These Forged flanges are highly durable, corrosion resistant and reliable. Our range of flanges finds application in industries like Oil and Gas Pipeline, Chemical Industry, Plumbing, Oil & Gas Industry, Water Supply Systems, Paper & Pulp Industry, Power Plant, Fabrication Industry, General purpose applications, Food Processing Industry, Structural Pipe, Heat Exchangers, etc.

## Products

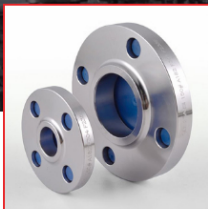
- Buttweld Fitting
- Forged Flanges**
- Slip On Flanges
- Blind Flanges
- Plate Flanges
- Socket Weld Flanges
- Threaded Flanges
- Lap Joint Flanges
- Ring Joint Flanges
- Reducing Flanges
- Pre-Fabricated Piping Spools
- Other Products

## Materials

- Stainless Steel
- Carbon Steel
- Alloy Steel
- Duplex and Super Duplex
- Exotic Material



## AVAILABLE TYPES OF FORGED INCONEL FLANGES STAINLESS STEEL



SLIP ON FLANGES



BLIND FLANGES

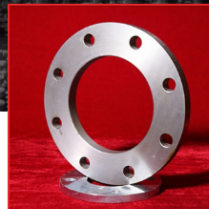


PLATE FLANGES



**Online Help!**  
+91 9820023412



SOCKET WELD FLANGES



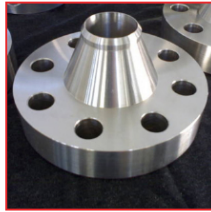
THREADED FLANGES



LAP JOINT FLANGES



RING TYPE JOINT FLANGE



REDUCING FLANGES

**INDIAN STANDARD FORGED INCONEL FLANGES STAINLESS STEEL**

Standard Flange Drilling as IS 1538						
Nominal Diameter DN	OD	ID	Thickness	Holes		PCD
				Number A	Diameter d	
mm	mm	mm	mm		mm	
80	200	91	21	4	19	160
100	220	117	22	8	19	180
125	250	144	22.5	8	19	210
150	285	171	23	8	23	240
200	340	222	24.5	8	23	295
250	395	277	26	12	23	350
300	445	327	27.5	12	23	400
350	505	359	29	16	23	460
400	565	411	30	16	28	515
450	615	462	31.5	20	28	565
500	670	513	33	20	28	620
600	780	616	36	20	31	725
700	895	716	38.5	24	31	110
750	960	765	40	24	31	117.7
800	1015	819	41.5	24	34	950
900	1115	920	44	28	34	1050
1000	1230	1020	47	28	37	1160
1100	1340	1124		32	37	124.6
1200	1455	1223	50	32	40	1380
1500	1800	1530	53	40	43	1710
1800	2100	1832		48	46	200

PCD x 3.14 / No of holes = Center

**AMERICAN STANDARD FORGED INCONEL FLANGES STAINLESS STEEL**

**AMERICAN STANDARD FORGED INCONEL FLANGES STAINLESS STEEL**

DIMENSIONS OF CLASS 150 FLANGES (ANSI B 16.5) (in mm)												
Nominal Pipe Size	Flange Dia 'O'	Dia of Bolt Circle 'A'	Dia of Bolt Holes 'D'	No. of Holes	Thickness of Flange 'C'	Diameter at Weld Bevel	Dia of Hub 'E'	Length Through Hub			Bor S/O & S/W B	
								S/O & S/W Y	W/N Y	L/J Y		
1/2"	15	88.9	60.3	15.9	4	11.1	21.3	30.2	15.9	47.6	15.9	22.3
3/4"	20	98.4	69.8	15.9	4	12.7	26.7	38.1	15.9	52.4	15.9	27.7
1"	25	107.9	79.4	15.9	4	14.3	33.5	49.2	17.5	55.6	17.5	34.5
1 1/2"	32	117.5	88.9	15.9	4	15.9	42.2	58.7	20.6	57.1	20.6	43.2
1 1/2"	40	127.0	98.4	15.9	4	17.5	48.3	65.1	22.2	61.9	22.2	49.5
2"	50	152.4	120.6	19.0	4	19.0	60.4	77.8	25.4	63.5	25.4	62.0
2 1/2"	65	177.8	139.7	19.0	4	22.2	73.1	90.5	28.6	69.8	28.6	74.7
3"	80	190.5	152.4	19.0	4	23.8	88.9	107.9	30.2	69.8	30.2	90.7
3 1/2"	90	216.0	177.8	19.0	8	23.8	101.6	122.2	31.7	71.4	31.7	103.4
4"	100	228.6	190.5	19.0	8	23.8	114.3	134.9	33.3	76.2	33.3	116.1
5"	125	254.0	215.9	22.2	8	23.8	141.2	163.5	36.5	88.9	36.5	143.8
6"	150	279.4	241.3	22.2	8	25.4	168.4	192.1	39.7	88.9	39.7	170.7
8"	200	342.9	298.4	22.2	8	28.6	219.2	246.1	44.4	101.6	44.4	221.5
10"	250	406.4	361.9	25.4	12	30.2	273.0	304.8	49.2	101.6	49.2	276.3
12"	300	482.6	431.8	25.4	12	31.8	323.8	365.1	55.6	114.3	55.6	327.1
14"	350	533.4	476.2	28.6	12	34.9	355.6	400.0	57.1	127.0	79.4	359.1
16"	400	596.9	539.7	28.6	16	36.5	406.4	457.2	63.5	127.0	87.3	410.5
18"	450	635.0	577.8	31.7	16	39.7	457.2	504.8	68.3	139.7	96.8	461.8
20"	500	698.5	635.0	31.7	20	42.9	508.0	558.8	73.0	144.5	103.2	513.1
24"	600	812.8	749.3	34.9	20	47.6	609.6	663.6	82.5	152.4	111.1	615.9

Note : Thickness 'C' is inclusive of Raised Face Thickness of 1.65 MM. For Class 150



**BRITISH STANDARD FORGED INCONEL FLANGES STAINLESS STEEL**

Table D for W. Steam Pressure upto 50 lbs per Sq. Inch (in inches)							Table E for W. Steam Pressure 50 lbs or inches)			
Nominal	Dia. of Flange	I.D. of Flange	Dia. of Bolt Circle	No. of Holes	Dia. of Bolt	Thickness	Nominal	Dia. of Flange	I.D. of Flange	Dia of Bolt Circle
Pipe Size	D	d5	k	Holes	d2	b	Pipe Size	D	d5	k
1/2"	3.3/4"	7/8"	2.5/8"	4	1/2"	3/16"	1/2"	3.3/4"	7/8"	2.5/8"
3/4"	4"	1.3/32"	2.7/8"	4	1/2"	3/16"	3/4"	4"	1.3/32"	2.7/8"
1"	4.1/2"	1.23/64"	3.1/4"	4	1/2"	3/16"	1"	4.1/2"	1.23/64"	3.1/4"
1.1/4"	4.3/4"	1.45/64"	3.7/16"	4	1/2"	1/4"	1.1/4"	4.3/4"	1.45/64"	3.7/16"
1.1/2"	5.1/4"	1.15/16"	3.7/8"	4	1/2"	1/4"	1.1/2"	5.1/4"	1.15/16"	3.7/8"
2"	6"	2.7/16"	4.1/2"	4	5/8"	5/16"	2"	6"	2.7/16"	4.1/2"

2.1/2	6.1/2"	2.15/16"	5"	4	5/8"	5/16"	2.1/2"	6.1/2"	2.15/16"	5"
3"	7.1/4"	3.37/64"	5.3/4"	4	5/8"	3/8"	3"	7.1/4"	3.37/64"	5.3/4"
3.1/2"	8"	4.5/64"	6.1/2"	4	5/8"	3/8"	3.1/2"	8"	4.5/64"	6.1/2"
4"	8.1/2"	4.37/64"	7"	4	5/8"	3/8"	4"	8.1/2"	4.37/64"	7"
5"	10"	5.43/64"	8.1/4"	8	5/8"	1/2"	5"	10"	5.43/64"	8.1/4"
6"	11"	6.23/32"	9.1/4"	8	5/8"	1/2"	6"	11"	6.23/32"	9.1/4"
7"	12"	7.5/8"	10.1/4"	8	5/8"	1/2"	7"	12"	7.5/8"	10.1/4"
8"	13.1/4"	8.23/32"	11.1/2"	8	5/8"	1/2"	8"	12.1/4"	8.23/32"	11.1/2"
9"	14.1/2"	9.23/32"	12.3/4"	8	5/8"	1/8"	9"	14.1/2"	9.23/32"	12.3/4"
10"	16"	10.7/8"	14"	8	3/4"	5/8">	10"	16"	10.7/8"	14"
12"	18"	12.7/8"	16"	12	3/4"	5/8"	12"	18"	12.7/8"	16"
14"	20.3/4"	14.9/64"	18.1/2"	12	7/8"	3/4"	14"	20.3/4"	14.9/64"	18.1/2"
16"	22.3/4"	16.5/32"	20.1/2"	12	7/8"	3/4"	16"	22.3/4"	16.5/32"	20.1/2"
18"	25.1/4"	18.3/16"	23"	12	7/8"	7/8"	18"	25.1/4"	18.3/16"	23"
20"	27.3/4"	20.13/16"	25.1/4"	16	7/8"	1"	20"	27.3/4"	20.13/16"	25.1/4"
24"	32.1/2"	24.1/4"	29.3/4"	16	1"	1.1/8"	24"	32.1/2"	24.1/4"	29.3/4"

## GERMAN STANDARD FORGED INCONEL FLANGES STAINLESS STEEL

DIN 2502 PN 16 (in mm)								
Nominal Pipe Size	Diameter of	Flange Dia	Flange I.D	Thickness of Flanges	Dia of Bolt Circle	No. of	Dia of Bolt Holes	
DN	Pipe	D	D5	B	K	holes	D2	KG
10	17.20	90	17.70	14	60	4	14	0.60
15	21.30	95	22.00	14	65	4	14	0.67
20	26.90	105	27.60	16	75	4	14	0.94
25	33.70	115	34.40	16	85	4	14	1.11
32	42.40	140	43.10	16	100	4	18	1.62
40	48.30	150	49.00	16	110	4	18	1.85
50	60.30	165	61.10	18	125	4	18	2.46
65	76.10	185	77.10	18	145	4	18	2.99
80	88.90	200	90.30	20	160	8	18	3.61
100	114.30	220	115.90	20	180	8	18	3.99
125	139.70	250	141.60	22	210	8	18	5.41
150	168.30	285	170.50	22	240	8	22	6.55
175	193.70	315	196.10	24	270	8	22	8.42
200	219.10	340	221.80	24	295	12	22	8.97
250	273.00	405	276.20	26	355	12	26	12.76
300	323.90	460	327.60	28	410	12	26	16.60
350	355.60	520	359.70	30	470	16	26	24.08
400	406.40	580	411.00	32	525	16	30	30.20
450	457.00	640	462.30	38	585	20	30	41.67
500	508.00	715	513.60	38	650	20	33	52.87

600	610.00	840	616.50	42	770	20	36	77.58
700	711.00	910	716.00	44	840	24	36	77.13
800	813.00	1025	818.00	50	950	24	39	106.35
900	914.00	1125	920.00	54	1050	28	39	125.39
1000	1016.00	1255	1022.00	60	1170	28	42	177.99

DIN 2503 PN25 (in mm)										
Nominal Pipe Size	Diameter of	Flange I.D	Flange Dia	Thickness of Flange	Dia of Bolt Circle	No. of	Dia of Bolt Holes		Nominal Pipe Size	Diameter of
DN	Pipe	D5	D	B	K	holes	D2	KG	DN	Pipe
10	17.20	17.70	90	16	60	4	14	0.69	10	17.20
15	21.30	22.00	95	16	65	4	14	0.77	15	21.30
20	26.90	27.60	105	18	75	4	14	1.05	20	26.90
25	33.70	34.40	115	18	85	4	14	1.25	25	33.70
32	42.40	43.10	140	18	100	4	18	1.83	32	42.40
40	48.30	49.00	150	18	110	4	18	2.09	40	48.30
50	60.30	61.10	165	20	125	4	18	2.74	50	60.30
65	76.10	77.10	185	22	145	8	18	3.48	65	76.10
80	88.90	90.30	200	24	160	8	18	4.33	80	88.90
100	114.30	115.90	235	24	190	8	22	5.61	100	114.30
125	139.70	141.60	270	26	220	8	26	7.60	125	139.70
150	168.30	170.50	300	28	250	8	26	9.58	150	168.30
175	193.70	196.10	330	28	280	12	26	10.76	175	193.70
200	219.10	221.80	360	30	310	12	26	13.37	200	219.10
250	273.00	276.20	425	32	370	12	30	18.45	250	273.00
300	323.90	327.60	485	34	430	16	30	23.79	300	323.90
350	355.60	359.70	555	38	490	16	33	37.77	350	355.60
400	406.40	411.00	620	40	550	16	36	45.41	400	406.40
500	508.00	513.60	730	44	660	20	36	65.97	500	508.00
600	610.00	616.50	845	50	770	20	39	93.57	600	610.00
700	711.00	716.00	960	52	875	24	42	117.53	700	711.00
800	813.00	818.00	1085	56	990	24	48	156.34	800	813.00
900	914.00	920.00	1185	62	1090	28	48	188.57	900	914.00
1000	1016.00	1022.00	1320	68	1210	28	56	255.79	1000	1016.00



### FORGED FLANGES MATERIAL GRADES

Material	Grades
Stainless Steel	ASTM A182 F Gr.304, 304L, 304H, 309, 310, 316, 316L, 316Ti, 317L, 321, 347, 347H, 904L
Carbon Steel	ASTM / ASME A/SA 105, ASTM A181 LF2 / A516 Gr.70 A36, A694 F42, F46, F52, F60, F65, F706
LTCS	ASTM A350 / ASME SA350, LF2, LF3

Alloy Steel	ASTM / ASME A/SA 182 & A 387 F1, F5, F9, F11, F12, F22, F91
Duplex Steel	ASTM A182, ASME SA 182 UNS S31803, UNS S32205 (Dual Certified).
Super Duplex Steel	ASTM A182, ASME SA 182, UNS S32750, UNS S32760, UNS S32790
High Nickel Alloy	ASTM SB564, SB160, SB472, SB162 Nickel 200 (UNS No. N02200), Nickel 201 (UNS No. N02201), Monel 400 (UNS No. N04400), Monel 500 (UNS No. N05500), Inconel 800 (UNS No. N08800), Inconel 825 (UNS No. N08825), Inconel 600 (UNS No. N06600), Inconel 625 (UNS No. N06625), Inconel 601 (UNS No. N06601), Hastelloy C 276 (UNS No. N10276), Alloy 20 (UNS No. N08020)

## INDUSTRIES WE SERVE



FERTILIZER SECTOR



ENERGY SECTOR



MINING & STEEL SECTOR



SHIP BUILDING



EPC PROJECTS



PETROCHEMICAL



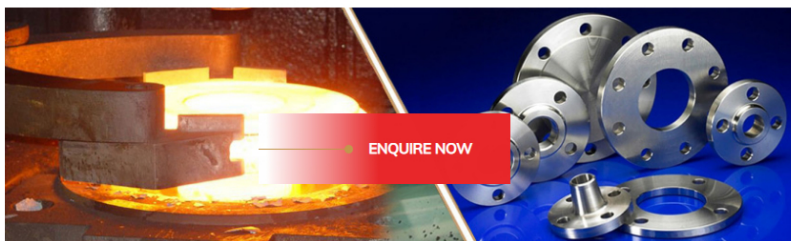
OIL & GAS



PHARMACEUTICAL



MARINE



ENQUIRE NOW

### CONTACT DETAIL

New Survey no 773/P1, Village :  
Irana, Tal : Kadi, Rajpur - Indrad  
Road, Dist : Mehsana -  
382715(Gujarat), India.

Phone: +91 9820023412

Email: [sales@jpipings.com](mailto:sales@jpipings.com)

### QUICK LINKS

[About Us](#)  
[Facilities](#)  
[Quality](#)  
[Gallery](#)  
[International Presence](#)  
[Join Us](#)  
[Contact](#)

### PRODUCTS

[Buttweld Fittings](#)  
[Forged Flanges](#)  
[Pre-Fabricated Piping Spools](#)  
[Other Products](#)

### MATERIALS

[Stainless Steel](#)  
[Carbon Steel](#)  
[Alloy Steel](#)  
[Duplex Steel](#)  
[Super Duplex Steel](#)  
[High Nickel Alloys](#)

### POPULAR TAGS

[Inconel Flanges Manufacturer in Mehsana](#)

[Inconel Flanges Manufacturer in Ahmedabad](#)

[Inconel Flanges Manufacturer in Gujarat](#)

[Inconel Flanges Manufacturer in India](#)

[Duplex Steel Flanges Manufacturer in Mehsana](#)

[Duplex Steel Flanges Manufacturer in Ahmedabad](#)

[Duplex Steel Flanges Manufacturer in Gujarat](#)

[Duplex Steel Flanges Manufacturer in India](#)

[Stainless Steel Butt weld Pipe Fittings](#)

[Hastelloy Butt weld Pipe Fittings](#)

[Flanges Manufacturer](#)

[Stainless Steel Elbow Pipe](#)

[Stainless Steel Nipples](#)

[Manufacturer of Couplings Pipe](#)