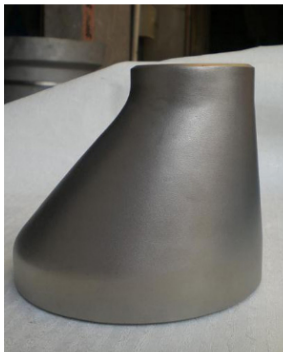


STAINLESS STEEL BUTTWELD PIPE FITTINGS REDUCER

COMMITTED FOR WORLD CLASS QUALITATIVE REDUCER MANUFACTURING.....

← HOME

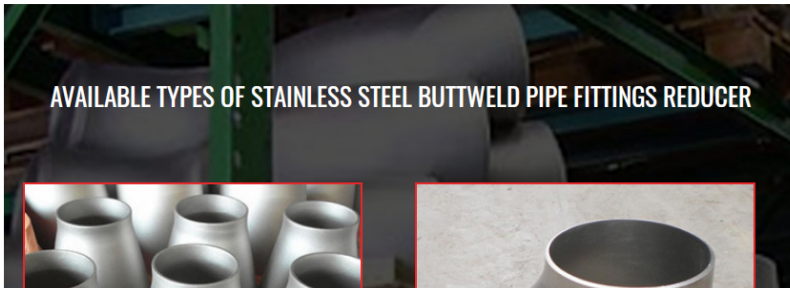


ABOUT STAINLESS STEEL BUTTWELD PIPE FITTINGS REDUCER

We supply Concentric & Eccentric Reducers in Seamless Construction up to 24Inch & Welded Constructions up to 96Inch and Fabricated up to 104Inch. We Supply Reducers in all Ferrous & Non-Ferrous Grades, especially Stainless Steel, Alloy Steel & Carbon Steel. Our Rolling Facility allow us to Roll Thickness up to 80mm.

Products

- Buttweld Fitting
 - Elbow
 - Tee
 - Reducer
 - Pipe Cap
 - Stub End
- Forged Flanges
- Pre-Fabricated Piping Spools
- Other Products



AVAILABLE TYPES OF STAINLESS STEEL BUTTWELD PIPE FITTINGS REDUCER



CONCENTRIC REDUCER

ECCENTRIC REDUCER

Materials

- Stainless Steel
- Carbon Steel
- Alloy Steel
- Duplex and Super Duplex
- Exotic Material

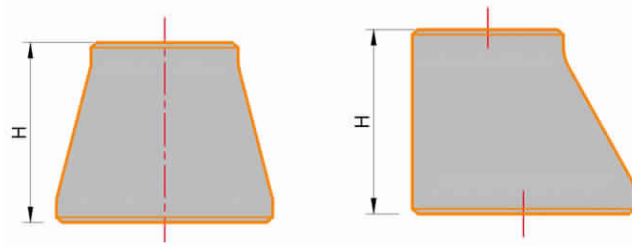
SEAMLESS PRODUCT RANGE

Product Type	FERROUS MATERIAL		NON-FERROUS MATERIAL	
	Size Range	Schedule	Size Range	Schedule
Reducer (Concentric / Eccentric)	½" to 24"	Sch : 10,20,40,80	½" to 4"	Sch : 10,20,40,80

WELDED PRODUCT RANGE

Product Type	FERROUS MATERIAL		NON-FERROUS MATERIAL	
	Size Range	Schedule	Size Range	Schedule
Reducer (Concentric / Eccentric)	8" to 24"	Sch : 10,20,40,80	8" to 24"	Sch : 10,20,40,80

DIMENSIONS OF STAINLESS STEEL BUTTWELD PIPE FITTINGS REDUCER



DN / NPS (Inch)	NPS in MM	End to End Height (H) in MM
1/8	6	-
1/4	8	-
3/8	10	-
1/2	15	-
3/4	20	38
1	25	51
1 1/4	32	51
1 1/2	40	64
2	50	76
2 1/2	65	89
3	80	89
3 1/2	90	102
4	100	102
5	125	127
6	150	140
8	200	152
10	250	178
12	300	203
14	350	330
16	400	356
18	450	381
20	500	508
22	550	508
24	600	508
26	650	610
28	700	610
30	750	610
32	800	610
34	850	610

36	900	610
38	950	610
40	1000	610
42	1050	610
44	1100	610
46	1150	711
48	1200	711

STAINLESS STEEL BUTTWELD PIPE FITTINGS REDUCER MATERIAL GRADES

Material	Grades
Stainless Steel	ASTM A403 WP Gr. 304, 304L, 304H, 309, 310, 316, 316L, 316Ti, 317L, 321, 347, 347H, 904L
Carbon Steel	ASTM A 234 WPB, WPBW, WPHY 42, WPHY 46, WPHY 52, WPH 60, WPHY 65 & WPHY 70.
Low Temperature Carbon Steel	ASTM A420 WPL3, A420 WPL6
Alloy Steel	ASTM / ASME A/SA 234 Gr. WP 1, WP 5, WP 9, WP 11, WP 12, WP 22, WP 91
Duplex Steel	ASTM A815, ASME SA 815 UNS S31803, UNS S32205(Dual Certified).
Super Duplex Steel	ASTM A815, ASME SA 815, UNS S32750, UNS 32760.
Nickel Alloy	ASTM / ASME SB 336 UNS 2200 (NICKEL 200), ASTM / ASME SB 363 , ASTM / ASME SB 366, UNS 2201 (NICKEL 201), UNS 4400 (MONEL 400), UNS 8020 (ALLOY 20 / 20 CB 3, UNS 8825 INCONEL (825), UNS 6600 (INCONEL 600), UNS 6601 (INCONEL 601), UNS 6625 (INCONEL 625), UNS 10276 (HASTELLOY C 276)

INDUSTRIES WE SERVE





CONTACT DETAIL

New Survey no 773/P1, Village :
Iraana, Tal : Kadi, Rajpur - Indrad
Road, Dist : Mehsana -
382715(Gujarat), India.

Phone: +91 9820023412

Email: sales@jpipings.com

QUICK LINKS

[About Us](#)
[Facilities](#)
[Quality](#)
[Gallery](#)
[International Presence](#)
[Join Us](#)
[Contact](#)

PRODUCTS

[Buttweld Fittings](#)
[Forged Flanges](#)
[Pre-Fabricated Piping Spools](#)
[Other Products](#)

MATERIALS

[Stainless Steel](#)
[Carbon Steel](#)
[Alloy Steel](#)
[Duplex Steel](#)
[Super Duplex Steel](#)
[High Nickel Alloys](#)

POPULAR TAGS

[Stainless Steel Buttweld Pipe Fittings in Mehsana](#)

[Stainless Steel Buttweld Pipe Fittings in Ahmedabad](#)

[Stainless Steel Buttweld Pipe Fittings in Gujarat](#)

[Stainless Steel Buttweld Pipe Fittings in India](#)

[Super Duplex Flanges Manufacturer in Mehsana](#)

[Super Duplex Flanges Manufacturer in Ahmedabad](#)

[Super Duplex Flanges Manufacturer in Gujarat](#)

[Super Duplex Flanges Manufacturer in India](#)

[Stainless Steel Buttweld Pipe Fittings](#)

[Hastelloy Buttweld Pipe Fittings](#)

[Flanges Manufacturer](#)

[Stainless Steel Elbow Pipe](#)

[Stainless Steel Nipples](#)

[Manufacturer of Couplings Pipe](#)