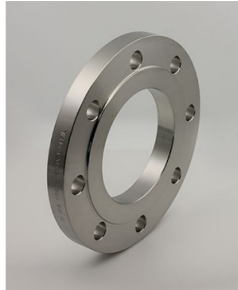




PLATE FLANGES

COMMITTED FOR WORLD CLASS QUALITATIVE PLATE FLANGES MANUFACTURING.....

← HOME



ABOUT PLATE FLANGES

Plain flange also referred to as Plate Flange Jis 16k, is also known by various other names such as flat flange, plate slip on flange or a ring flange. A Plate Flange Jis 5k is very easy to recognize due to their slim and compact shape. A Plate Flange Asme B16.5 Class 300 looks like a flat circular disk, with an inner bore. This inner bore of the Plate Flange Din En 1092-1 has bolt holes on it. The Plate Flange Jis 10k slips over the pipe.

The inner hole of Plate Flange Awwa C207 Class D is a little bigger than the outer diameter of the pipe. Plate Flange Class 600 are usually secured to the pipe with a fillet weld at the bottom. And the top of Api 6A Plate Flange, they are supported with the help of the pipes. The welding method used on the Plate Flange Asme B16.5 is fillet weld. Hence, the Plate Flange A105 is not suitable for applications that involve the use of high pressure.

Products

- Buttweld Fitting
- Forged Flanges
 - Slip On Flanges
 - Blind Flanges
 - Plate Flanges
 - Socket Weld Flanges
 - Threaded Flanges
 - Lap Joint Flanges
 - Ring Joint Flanges
 - Reducing Flanges
- Pre-Fabricated Piping Spools
- Other Products

DIMENSIONS OF ANSI B16.5 PLATE FLANGE

Bore	Common Dimension			Raised Face	Drilling				Approx. Weight (Kg)		
	Nominal Bore	d1	D		t	K	d4	f		Number of Bolts	x
10	14	90	14	60	40	2	4	M12	(1/2")	14	0.63
	17.2*										
15	20	95	14	65	45	2	4	M12	(1/2")	14	0.72
	21.3*										
20	25	105	16	75	58	2	4	M12	(1/2")	14	1.01
	26.9*										
25	30	115	16	85	68	2	4	M12	(1/2")	14	1.23
	33.7*										
32	38	140	16	100	78	2	4	M16	(5/8")	18	1.80
	42.4*										
40	44.5	150	16	110	88	3	4	M16	(5/8")	18	2.09
	48.3*										
50	57	165	18	125	102	3	4	M16	(5/8")	18	2.88
	60.3*										
65	76.1*	185	18	145	122	3	4	M16	(5/8")	18	3.66
80	88.9	200	20	160	138	3	8	M16	(5/8")	18	4.77
100	108	220	20	180	158	3	8	M16	(5/8")	18	5.65
	114.3*										
125	133	250	22	210	188	3	8	M16	(5/8")	18	8.42
	139.7*										
150	150	285	22	240	212	3	8	M20	(3/4")	22	10.4

Materials

- Stainless Steel
- Carbon Steel
- Alloy Steel
- Duplex and Super Duplex
- Exotic Material

150	150	150	150	150	150	150	150	150	150	150	150	150
	168.3*											
200	216	340	24	295	268	3	12	M20	(3/4")	23	16.1	
	219.1*											
250	267	405	26	355	320	3	12	M24	(7/8")	27	24.9	
	273*											
300	318	460	28	410	378	4	12	M24	(7/8")	27	35.1	
	323.9*											
350	355.6*	520	30	470	438	4	16	M24	(7/8")	27	47.8	
	368											
400	406.4*	580	32	525	490	4	16	M27	(1")	30	63.5	
	419											
500	508*	715	36	650	610	4	20	M30	(1-1/8")	33	102.0	

PLATE FLANGES MATERIAL GRADES

Material	Grades
Stainless Steel	ASTM A182 F Gr.304, 304L, 304H, 309, 310, 316, 316L, 316Ti, 317L, 321, 347, 347H, 904L
Carbon Steel	ASTM / ASME A/SA 105, ASTM A181 LF2 / A516 Gr.70 A36, A694 F42, F46, F52, F60, F65, F706
LTCS	ASTM A350 / ASME SA350, LF2, LF3
Alloy Steel	ASTM / ASME A/SA 182 & A 387 F1, F5, F9, F11, F12, F22, F91
Duplex Steel	ASTM A182, ASME SA 182 UNS S31803, UNS S32205 (Dual Certified).
Super Duplex Steel	ASTM A182, ASME SA 182, UNS S32750, UNS S32760, UNS S32790
High Nickel Alloy	ASTM SB564, SB160, SB472, SB162 Nickel 200 (UNS No. N02200), Nickel 201 (UNS No. N02201), Monel 400 (UNS No. N04400), Monel 500 (UNS No. N05500), Inconel 800 (UNS No. N08800), Inconel 825 (UNS No. N08825), Inconel 600 (UNS No. N06600), Inconel 625 (UNS No. N06625), Inconel 601 (UNS No. N06601), Hastelloy C 276 (UNS No. N10276), Alloy 20 (UNS No. N08020)

INDUSTRIES WE SERVE



FERTILIZER SECTOR



ENERGY SECTOR



MINING & STEEL SECTOR



SHIP BUILDING



EPC PROJECTS



PETROCHEMICAL



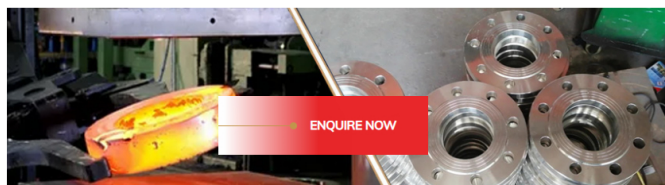
OIL & GAS



PHARMACEUTICAL



MARINE



ENQUIRE NOW



CONTACT DETAIL

New Survey no 773/P1, Village :
Irana, Tal : Kadi, Rajpur - Indrad
Road, Dist : Mehsana -
382715(Gujarat), India.

Phone: +91 9820023412

Email: sales@jpipings.com

QUICK LINKS

[About Us](#)
[Facilities](#)
[Quality](#)
[Gallery](#)
[International Presence](#)
[Join Us](#)
[Contact](#)

PRODUCTS

[Buttweld Fittings](#)
[Forged Flanges](#)
[Pre-Fabricated Piping Spools](#)
[Other Products](#)

MATERIALS

[Stainless Steel](#)
[Carbon Steel](#)
[Alloy Steel](#)
[Duplex Steel](#)
[Super Duplex Steel](#)
[High Nickel Alloys](#)

POPULAR TAGS

[304 Stainless Steel Pipe Fittings](#) [Pipe Fittings Stainless Steel](#) [Flanges Stainless Steel](#) [Stainless Steel Flanges Manufacturer](#) [Pipe Fittings Manufacturer](#)
[Monel 400 Flanges Manufacturer](#) [Duplex Steel Flanges Manufacturer](#) [Inconel Flanges Manufacturer](#) [Super Duplex Flanges Manufacturer](#)
[Stainless Steel Buttweld Pipe Fittings](#) [Hastelloy Buttweld Pipe Fittings](#) [Flanges Manufacturer](#) [Stainless Steel Elbow Pipe](#) [Stainless Steel Nipples](#)
[Manufacturer of Couplings Pipe](#)