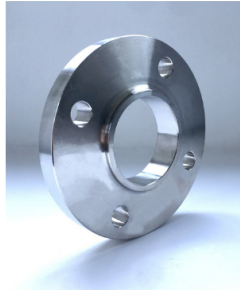
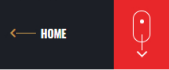




# SLIP ON FLANGES

COMMITTED FOR WORLD CLASS QUALITATIVE SLIP ON FLANGES MANUFACTURING.....

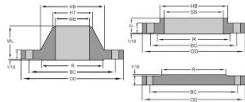


## ABOUT SLIP ON FLANGES

According to their name, these pipe flanges slip over the pipe, that is why it is called slip-on flange. It is fabricated with an inside diameter that is bigger than the pipe's outside distance across. These connections are associated with the pipe by means of fillet weld at the top and base of the flange. Slip on pipe flanges are used with a raised or flat face. At the time of raised face, the standard height would be 1/16" for slip on pipe flanges under 400# while for slip on pipe flanges of 400#, the standard height would be 1/4".

The Slip On pipe flanges include materials carbon steel slip-on pipe flanges, stainless steel slip on pipe flanges and alloy steel slip on pipe flanges available in various class such as 150 LBS, 300 LBS, 600 LBS, 900 LBS. These flanges are ideal for low pressure applications.

## 150 LB SLIP ON FLANGE DIMENSIONS



Nominal Bore Slip On	Dia. (D)	Thick. (E)	Dia. (F)	Dia. (B)	Dia. (A)	Height (H)	Drilling		
							Nbr	Holes	Dia. (C)
1/2"	90	9.6	35.05	30	22.2	14	4	15.87	60.3
3/4"	100	11.2	42.93	38	27.7	14	4	15.87	69.9
1"	110	12.7	50.80	49	34.5	16	4	15.87	79.4
1 1/4"	115	14.3	63.50	59	43.2	19	4	15.87	88.9
1 1/2"	125	15.9	73.15	65	49.5	21	4	15.87	98.4
2"	150	17.5	91.95	78	61.9	24	4	19.05	120.7
2 1/2"	180	20.7	104.65	90	74.6	27	4	19.05	139.7
3"	190	22.3	127.00	108	90.7	29	4	19.05	152.4
3 1/2"	215	22.3	139.70	122	103.4	30	8	19.05	177.8
4"	230	22.3	157.22	135	116.1	32	8	19.05	190.5
5"	255	22.3	185.67	164	143.8	35	8	22.22	215.9
6"	280	23.9	215.90	192	170.7	38	8	22.22	241.3
8"	345	27.0	269.75	246	221.5	43	8	22.22	298.5
10"	405	28.6	323.85	305	276.2	48	12	25.40	362.0
12"	485	30.2	381.00	365	327.0	54	12	25.40	431.8
14"	535	33.4	412.75	400	359.2	56	12	28.57	476.3
16"	595	35.0	469.90	457	410.5	62	16	28.57	539.8
18"	635	38.1	533.40	505	461.8	67	16	31.75	577.9

## Products

- Buttweld Fitting
- Forged Flanges
  - Slip On Flanges
  - Blind Flanges
  - Plate Flanges
  - Socket Weld Flanges
  - Threaded Flanges
  - Lap Joint Flanges
  - Ring Joint Flanges
  - Reducing Flanges
- Pre-Fabricated Piping Spools
- Other Products

## Materials

- Stainless Steel
- Carbon Steel
- Alloy Steel
- Duplex and Super Duplex
- Exotic Material

20"	700	41.3	584.20	559	513.1	/1	20	31.75	635.0
24"	815	46.1	692.15	663	616.0	81	20	34.92	74

### 300# SLIP ON FLANGE DIMENSIONS

Nominal Bore Slip On	Dia.(D)	Thick.(E)	Dia.(F)	Dia.(B)	Dia.(A)	Height(H)	Nbr	Holes	Dia.(C)
1/2"	21.3	12.7	35.05	38	22.2	21	4	15.87	66.7
3/4"	26.7	14.3	42.93	48	27.7	24	4	19.05	82.6
1"	33.4	15.9	50.80	54	34.5	25	4	19.05	88.9
1 1/4"	42.2	17.5	63.50	64	43.2	25	4	19.05	98.4
1 1/2"	48.3	19.1	73.15	70	49.5	29	4	22.22	114.3
2"	60.3	20.7	91.95	84	61.9	32	8	19.05	127.0
2 1/2"	73.0	23.9	104.65	100	74.6	37	8	22.22	149.2
3"	88.9	27.0	127.00	117	90.7	41	8	22.22	168.3
3 1/2"	101.6	28.6	139.70	133	103.4	43	8	22.22	184.2
4"	114.3	30.2	157.22	146	116.1	46	8	22.22	200.0
5"	141.3	33.4	185.67	178	143.8	49	8	22.22	235.0
6"	168.3	35.0	215.90	206	170.7	51	12	22.22	269.9
8"	219.1	39.7	269.75	260	221.5	60	12	25.40	330.2
10"	273.0	46.1	323.85	321	276.2	65	16	28.57	387.4
12"	323.8	49.3	381.00	375	327.0	71	16	31.75	450.8
14"	355.6	52.4	412.75	425	359.2	75	20	31.75	514.4
16"	406.4	55.6	469.90	483	410.5	81	20	34.92	571.5
18"	457.0	58.8	533.40	533	461.8	87	24	34.92	628.6
20"	508.0	62.0	584.2	587	513.1	94	24	34.92	685.8
24"	610.0	68.3	692.15	702	616.0	105	24	41.27	812.8

### CLASS 600 SLIP ON FLANGE DIMENSIONS

Nominal Bore Slip On	Dia.(D)	Thick.(E)	Dia.(F)	Dia.(B)	Dia.(A)	Height(H)	Drilling		
							Nbr	Holes	Dia.(C)
1/2"	21.3	14.3	35.05	38	22.2	22	4	15.87	66.7
3/4"	26.7	15.9	42.93	48	27.7	25	4	19.05	82.6
1"	33.4	17.5	50.80	54	34.5	27	4	19.05	88.9
1 1/4"	42.2	20.7	63.50	64	43.2	29	4	19.05	98.4
1 1/2"	48.3	22.3	73.15	70	49.5	32	4	22.22	114.3
2"	60.3	25.4	91.95	84	61.9	37	8	19.05	127.0
2 1/2"	73.0	28.6	104.65	100	74.6	41	8	22.22	149.2
3"	88.9	31.8	127.00	117	90.7	46	8	22.22	168.3
3 1/2"	101.6	35.0	139.70	133	103.4	49	8	25.40	184.2
4"	114.3	38.1	157.22	152	116.1	54	8	25.40	215.9
5"	141.3	44.5	185.67	189	143.8	60	8	28.57	266.7
6"	168.3	47.7	215.90	222	170.7	67	12	28.57	292.1
8"	219.1	55.6	269.75	273	221.5	76	12	31.75	349.2
10"	273.0	63.5	325.85	343	276.2	86	16	34.92	431.8
12"	323.8	66.7	381.00	400	327.0	92	20	34.92	489.0
14"	355.6	69.9	412.75	432	359.2	94	20	38.10	527.0
16"	406.4	76.2	469.90	495	410.5	106	20	41.27	603.2
18"	457.0	82.6	533.40	546	461.8	117	20	44.45	654.0
20"	508.0	88.9	584.20	610	513.1	127	24	44.45	723.9
24"	610.0	101.6	692.15	718	616.0	140	24	50.80	838.2

### SLIP ON FLANGES MATERIAL GRADES

Material	Grades
Stainless Steel	ASTM A182 F Gr.304, 304L, 304H, 309, 310, 316, 316L, 316Ti, 317L, 321, 347, 347H, 904L
Carbon Steel	ASTM / ASME A/SA 105, ASTM A181 LF2 / A516 Gr.70 A36, A694 F42, F46, F52, F60, F65, F706
LTCS	ASTM A350 / ASME SA350, LF2, LF3
Alloy Steel	ASTM / ASME A/SA 182 & A 387 F1, F5, F9, F11, F12, F22, F91
Duplex Steel	ASTM A182, ASME SA 182 UNS S31803, UNS S32205 (Dual Certified),
Super Duplex Steel	ASTM A182, ASME SA 182, UNS S32750, UNS S32760, UNS S32790
High Nickel Alloy	ASTM SB564, SB160, SB472, SB162 Nickel 200 (UNS No. N02200), Nickel 201 (UNS No. N02201), Monel 400 (UNS No. N04400), Monel 500 (UNS No. N05500), Inconel 800 (UNS No. N08800), Inconel 825 (UNS No. N08825), Inconel 600 (UNS No. N06600), Inconel 625 (UNS No. N06625), Inconel 601 (UNS No. N06601), Hastelloy C 276 (UNS No. N10276), Alloy 20 (UNS No. N08020)

## INDUSTRIES WE SERVE



FERTILIZER SECTOR



ENERGY SECTOR



MINING & STEEL SECTOR



SHIP BUILDING



EPC PROJECTS



PETROCHEMICAL



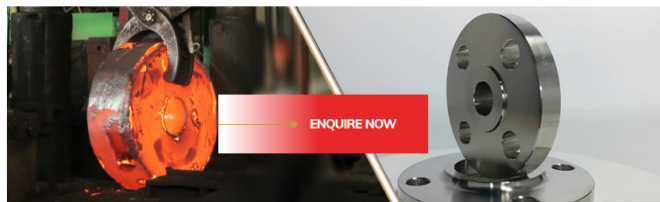
OIL & GAS



PHARMACEUTICAL



MARINE



### CONTACT DETAIL

New Survey no 773/P1, Village :  
Iranva, Tal : Kadi, Rajpur - Indrad  
Road, Dist : Mehsana -  
382715(Gujarat), India.

Phone: +91 9820023412

Email: [sales@jpipings.com](mailto:sales@jpipings.com)

### QUICK LINKS

[About Us](#)  
[Facilities](#)  
[Quality](#)  
[Gallery](#)  
[International Presence](#)  
[Join Us](#)  
[Contact](#)

### PRODUCTS

[Buttweld Fittings](#)  
[Forged Flanges](#)  
[Pre-Fabricated Piping Spools](#)  
[Other Products](#)

### MATERIALS

[Stainless Steel](#)  
[Carbon Steel](#)  
[Alloy Steel](#)  
[Duplex Steel](#)  
[Super Duplex Steel](#)  
[High Nickel Alloys](#)

### POPULAR TAGS

[304 Stainless Steel Pipe Fittings](#) [Pipe Fittings Stainless Steel](#) [Flanges Stainless Steel](#) [Stainless Steel Flanges Manufacturer](#) [Pipe Fittings Manufacturer](#)  
[Monel 400 Flanges Manufacturer](#) [Duplex Steel Flanges Manufacturer](#) [Inconel Flanges Manufacturer](#) [Super Duplex Flanges Manufacturer](#)  
[Stainless Steel Buttweld Pipe Fittings](#) [Hastelloy Buttweld Pipe Fittings](#) [Flanges Manufacturer](#) [Stainless Steel Elbow Pipe](#) [Stainless Steel Nipples](#)

