



COUPLING

COMMITTED FOR WORLD CLASS QUALITATIVE COUPLING MANUFACTURING.....

← HOME



ABOUT COUPLING

Jubilant Piping Solution PVT. LTD is a known manufacturer and supplier of the most widely used Stainless Steel Socket Weld Coupling used for the amalgamation of two pipes and comes in various sizes, thickness, shapes according to the specification of our clients. Socket weld couplings are a short length of pipe, with a socket at one or both ends that allows two pipes/tubes to be joint.

Forged Coupling provides resistance to sulphur and other non-oxidizing chemical elements. These couplings are the building blocks with appropriate standard and help bear a lot of pressure, thus making it durable over the years. We offer high tensile Coupling used for lines conveying flammable, toxic, expensive material and no leakage is permitted. The couplings are very important to establish a branch connection.

Products

- Buttweld Fitting
- Forged Flanges
- Pre-Fabricated Piping Spools
- Other Products
 - Nipple
 - Coupling
 - Olets
 - Gaskets

Materials

- Stainless Steel
- Carbon Steel
- Alloy Steel
- Duplex and Super Duplex
- Exotic Material

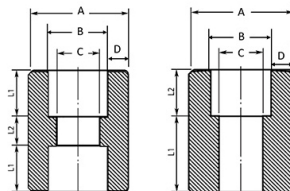
Online Help!
+91 9820023412

AVAILABLE TYPES OF COUPLING

FULL COUPLING

HALF COUPLING

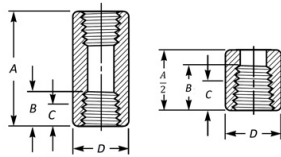
ASME B16.11 SOCKET WELD COUPLING DIMENSIONS



NOMINAL PIPE SIZE	OUTER DIAMETER	SOCKET BORE DIAMETER	BORE DIAMETER OF FITTINGS	BORE DIAMETER OF FITTINGS	BORE DIAMETER OF FITTINGS	WALL THICKNESS # 3000	WALL THICKNESS # 3000	WALL THICKNESS # 6000	V T #
Inch.	A	B	C-3000	C-6000	C-9000	D	D	D	C

		Maximum Minimum	Maximum Minimum	Maximum Minimum	Maximum Minimum	Average	Minimum	Average	
1/8	B+D	11.2 10.8	7.6 6.1	4.8 3.2		3.18	3.18	3.96	3
1/4	B+D	14.6 14.2	10.0 8.5	7.1 5.6		3.78	3.30	4.6	4
3/8	B+D	18.0 17.6	13.3 11.8	9.9 8.4		4.01	3.50	5.03	4
1/2	B+D	22.2 21.8	16.6 15.0	12.5 11.0	7.2 5.6	4.67	4.09	5.97	5
3/4	B+D	27.6 27.2	21.7 20.2	16.3 14.8	11.8 10.3	4.90	4.27	6.96	6
1	B+D	34.3 33.9	27.4 25.9	21.5 19.9	16.0 14.4	5.69	4.98	7.92	6
1 1/4	B+D	43.1 42.7	35.8 34.3	30.2 28.7	23.5 22.0	6.07	5.28	7.92	6
1 1/2	B+D	49.2 48.8	41.6 40.1	34.7 33.2	28.7 27.2	6.35	5.54	8.92	7
2	B+D	61.7 61.2	53.3 51.7	43.6 42.1	38.9 37.4	6.93	6.04	10.92	9
2 1/2	B+D	74.4 73.9	64.2 61.2			8.76	7.67		
3	B+D	90.3 89.8	79.4 76.4			9.52	8.30		
4	B+D	103.8 100.7	103.8 100.7			10.69	9.35		
All Dimensions are in mm									

ASME B16.11 THREADED COUPLING DIMENSIONS



NOMINAL PIPE SIZE	END TO END		MINIMUM LENGTH OF THREAD		OUTSIDE DIAMETER	
	Full Coupling	Half Coupling	B	C	# 3000	# 6000
Inch.	A	A/2			D	D
1/8	32	A/2	6.7	6.4	16	22
1/4	35	A/2	10.2	8.1	19	25
3/8	38	A/2	10.4	9.1	22	32
1/2	48	A/2	13.6	10.9	28	38
3/4	51	A/2	13.9	12.7	35	44
1	60	A/2	17.3	14.7	44	57
1 1/4	67	A/2	18	17	57	64
1 1/2	79	A/2	18.4	17.8	64	76
2	86	A/2	19.2	19	76	92
2 1/2	92	A/2	28.9	23.6	92	108
3	108	A/2	30.5	25.9	108	127
4	121	A/2	33	27.7	140	159
All Dimensions are in mm						

COUPLING MATERIAL GRADES

Material	Grades
Stainless Steel Coupling	ASTM A182 F304, F304L, F306, F316L, F304H, F309S, F309H, F310S, F310H, F316Ti, F316H, F316LN, F317, F317L, F321, F321H, F11, F22, F91, F347, F347H, F454L, ASTM A312/A403 TP304, TP304L, TP316, TP316L

Carbon Steel Coupling	ASTM / ASME A 105, ASTM / ASME A 350 LF 2, ASTM / ASME A 53 GR. A & B, ASTM A 106 GR. A, B & C, API 5L GR. B, API 5L X 42, X 46, X 52, X 60, X 65 & X 70, ASTM / ASME A 691 GR A, B & C
Alloy Steel Coupling	ASTM / ASME A 182, ASTM / ASME A 335, ASTM / ASME A 234 GR P 1, P 5, P 9, P 11, P 12, P 22, P 23, P 91, ASTM / ASME A 691 GR 1 CR, 1 1/4 CR, 2 1/4 CR, 5 CR, 9CR, 91
Duplex / Super Duplex Steel Coupling	ASTM A 182 – F51, F53, F55 S31803, S32205, S32550, S32750, S32760, S32950.
Nickel Alloy Coupling	ASTM / ASME SB 336, ASTM / ASME SB 564 / 160 / 163 / 472, UNS 2200 (NICKEL 200) , UNS 2201 (NICKEL 201) , UNS 4400 (MONEL 400) , UNS 8020 (ALLOY 20 / 20 CB 3) , UNS 8825 INCONEL (825) , UNS 6600 (INCONEL 600) , UNS 6601 (INCONEL 601) , UNS 6625 (INCONEL 625) , UNS 10276 (HASTELLOY C 276)

INDUSTRIES WE SERVE



FERTILIZER SECTOR



ENERGY SECTOR



MINING & STEEL SECTOR



SHIP BUILDING



EPC PROJECTS



PETROCHEMICAL



OIL & GAS



PHARMACEUTICAL



MARINE



CONTACT DETAIL

New Survey no 773/P1, Village : Irana, Tal : Kadi, Rajpur - Indrad Road, Dist : Mehsana - 382715(Gujarat), India.

Phone: +91 9820023412

Email: sales@jpipings.com

QUICK LINKS

[About Us](#)
[Facilities](#)
[Quality](#)
[Gallery](#)
[International Presence](#)
[Join Us](#)
[Contact](#)

PRODUCTS

[Buttweld Fittings](#)
[Forged Flanges](#)
[Pre-Fabricated Piping Spools](#)
[Other Products](#)

MATERIALS

[Stainless Steel](#)
[Carbon Steel](#)
[Alloy Steel](#)
[Duplex Steel](#)
[Super Duplex Steel](#)
[High Nickel Alloys](#)

POPULAR TAGS

- [304 Stainless Steel Pipe Fittings](#)
- [Pipe Fittings Stainless Steel](#)
- [Flanges Stainless Steel](#)
- [Stainless Steel Flanges Manufacturer](#)
- [Pipe Fittings Manufacturer](#)
- [Monel 400 Flanges Manufacturer](#)
- [Duplex Steel Flanges Manufacturer](#)
- [Inconel Flanges Manufacturer](#)
- [Super Duplex Flanges Manufacturer](#)
- [Stainless Steel Buttweld Pipe Fittings](#)
- [Hastelloy Buttweld Pipe Fittings](#)
- [Flanges Manufacturer](#)
- [Stainless Steel Elbow Pipe](#)
- [Stainless Steel Nipples](#)
- [Manufacturer of Couplings Pipe](#)