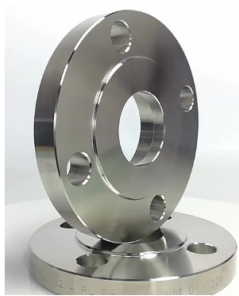
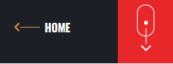


SOCKET WELD FLANGES

COMMITTED FOR WORLD CLASS QUALITATIVE SOCKET WELD FLANGES MANUFACTURING.....



ABOUT SOCKET WELD FLANGES

Socket Weld Flange Din En 1092-1 Is Connected To A Pipe With The Help Of A Single Fillet Weld, That Is Executed On The Outer Side Of The Flange. Although The Socket Weld Flange Is Different From The Slip-On Flange Type, Which Requires Two Welds. According To ASME B31.1, The Execution Of SW Flange Connection Using A Socket Weld Flange, Is By First Inserting The Pipe In The Socket Of The Flange Until It Reaches The Bottom Of The Flange.

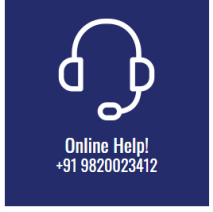
This gap shall be left by the Stainless Steel Socket Weld Flange Manufacturer In India to allow proper positioning of the pipe inside the flange socket. This is done after the solidification of the weld. Socket Weld Flange Awwa C207 Class D is generally used for small-size and high-pressure piping systems that do not transfer highly corrosive fluid media. This because these API 6A SWRF Flange types are a subject to corrosion in the presence of a gap between the end of the pipe and the shoulder of the socket.

Products

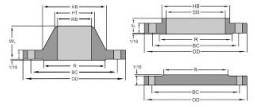
- Buttweld Fitting
- Forged Flanges
 - Slip On Flanges
 - Blind Flanges
 - Plate Flanges
 - Socket Weld Flanges
 - Threaded Flanges
 - Lap Joint Flanges
 - Ring Joint Flanges
 - Reducing Flanges
- Pre-Fabricated Piping Spools
- Other Products

Materials

- Stainless Steel
- Carbon Steel
- Alloy Steel
- Duplex and Super Duplex
- Exotic Material



150 LB SOCKET WELD FLANGE DIMENSIONS



Nominal Bore Socket Weld	Dia. (D)	Thick. (E)	Dia. (F)	Dia. (B)	Dia. (A)	Height (H)	Drilling		
							Nbr	Holes	Dia. (C)
1/2"	90	11.2	35.05	30	22.2	14	4	15.87	60.3
3/4"	100	12.7	42.92	38	27.7	14	4	15.87	69.9
1"	110	14.3	50.80	49	34.5	16	4	15.87	79.4
1 1/4"	115	15.9	63.50	59	43.2	19	4	15.87	88.9
1 1/2"	125	17.5	73.15	65	49.5	21	4	15.87	98.4
2"	150	19.1	91.94	78	61.9	24	4	19.05	120.7
2 1/2"	180	22.3	104.65	90	74.6	27	4	19.05	139.7
3"	190	23.9	127.00	108	90.7	29	4	19.05	152.4

300# SOCKET WELD FLANGE DIMENSIONS

Nominal Bore Socket Weld	Dia. (D)	Thick. (E)	Dia. (F)	Dia. (B)	Dia. (A)	Height (H)	Drilling		
							Nbr	Holes	Dia. (C)
1/2"	95	12.7	35.05	38	22.2	21	4	15.87	66.7
3/4"	115	14.3	42.92	48	27.7	24	4	19.05	82.6
1"	125	15.9	50.80	54	34.5	25	4	19.05	88.9
1 1/4"	135	17.5	63.50	64	43.2	25	4	19.05	98.4
1 1/2"	155	19.1	73.15	70	49.5	29	4	22.22	114.3

2"	165	20.7	91.94	84	61.9	32	8	19.05	127.0
2 1/2"	190	23.9	104.65	100	74.6	37	8	22.22	149.2
3"	210	27.0	127.00	117	90.7	41	8	22.22	168

SOCKET WELD FLANGES MATERIAL GRADES

Material	Grades
Stainless Steel	ASTM A182 F Gr.304, 304L, 304H, 309, 310, 316, 316L, 316Ti, 317L, 321, 347, 347H, 904L
Carbon Steel	ASTM / ASME A/SA 105, ASTM A181 LF2 / A516 Gr.70 A36, A694 F42, F46, F52, F60, F65, F706
LTCS	ASTM A350 / ASME SA350, LF2, LF3
Alloy Steel	ASTM / ASME A/SA 182 & A 387 F1, F5, F9, F11, F12, F22, F91
Duplex Steel	ASTM A182, ASME SA 182 UNS S31803, UNS S32205 (Dual Certified).
Super Duplex Steel	ASTM A182, ASME SA 182, UNS S32750, UNS S32760, UNS S32790
High Nickel Alloy	ASTM SB564, SB160, SB472, SB162 Nickel 200 (UNS No. N02200), Nickel 201 (UNS No. N02201), Monel 400 (UNS No. N04400), Monel 500 (UNS No. N05500), Inconel 800 (UNS No. N08800), Inconel 825 (UNS No. N08825), Inconel 600 (UNS No. N06600), Inconel 625 (UNS No. N06625), Inconel 601 (UNS No. N06601), Hastelloy C 276 (UNS No. N10276), Alloy 20 (UNS No. N08020)

INDUSTRIES WE SERVE



FERTILIZER SECTOR



ENERGY SECTOR



MINING & STEEL SECTOR



SHIP BUILDING



EPC PROJECTS



PETROCHEMICAL



OIL & GAS



PHARMACEUTICAL



MARINE



CONTACT DETAIL

New Survey no 773/P1, Village :
Irana, Tal : Kadi, Rajpur - Indrad
Road, Dist : Mehsana -
382715(Gujarat), India.

Phone: +91 9820023412

Email: sales@jpipings.com

QUICK LINKS

[About Us](#)
[Facilities](#)
[Quality](#)
[Gallery](#)
[International Presence](#)
[Join Us](#)
[Contact](#)

PRODUCTS

[Buttweld Fittings](#)
[Forged Flanges](#)
[Pre-Fabricated Piping Spools](#)
[Other Products](#)

MATERIALS

[Stainless Steel](#)
[Carbon Steel](#)
[Alloy Steel](#)
[Duplex Steel](#)
[Super Duplex Steel](#)
[High Nickel Alloys](#)

POPULAR TAGS

[304 Stainless Steel Pipe Fittings](#)

[Pipe Fittings Stainless Steel](#)

[Flanges Stainless Steel](#)

[Stainless Steel Flanges Manufacturer](#)

[Pipe Fittings Manufacturer](#)

[Monel 400 Flanges Manufacturer](#)

[Duplex Steel Flanges Manufacturer](#)

[Inconel Flanges Manufacturer](#)

[Super Duplex Flanges Manufacturer](#)

[Stainless Steel Butt weld Pipe Fittings](#)

[Hastelloy Butt weld Pipe Fittings](#)

[Flanges Manufacturer](#)

[Stainless Steel Elbow Pipe](#)

[Stainless Steel Nipples](#)

[Manufacturer of Couplings Pipe](#)