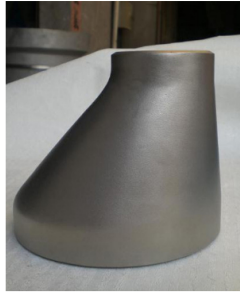


REDUCER - CONCENTRIC & ECCENTRIC

COMMITTED FOR WORLD CLASS QUALITATIVE REDUCER MANUFACTURING.....

← HOME

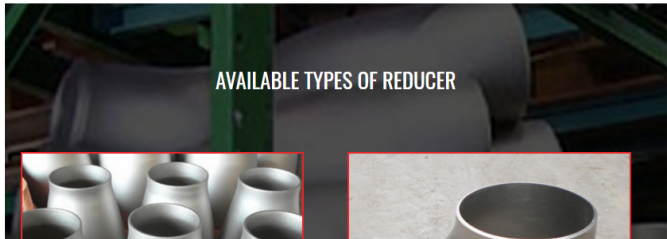


ABOUT REDUCER

We supply Concentric & Eccentric Reducers in Seamless Construction up to 24inch & Welded Constructions up to 96inch and Fabricated up to 104inch. We Supply Reducers in all Ferrous & Non-Ferrous Grades, especially Stainless Steel, Alloy Steel & Carbon Steel. Our Rolling Facility allow us to Roll Thickness up to 80mm.

Products

- Buttweld Fitting
 - Elbow
 - Tee
 - Reducer
 - Pipe Cap
 - Stub End
- Forged Flanges
- Pre-Fabricated Piping Spools
- Other Products



AVAILABLE TYPES OF REDUCER



CONCENTRIC REDUCER

ECCENTRIC REDUCER

Materials

- Stainless Steel
- Carbon Steel
- Alloy Steel
- Duplex and Super Duplex
- Exotic Material



SEAMLESS PRODUCT RANGE

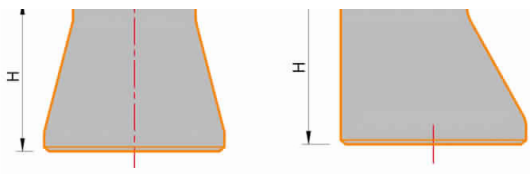
Product Type	FERROUS MATERIAL		NON-FERROUS MATERIAL	
	Size Range	Schedule	Size Range	Schedule
Reducer (Concentric / Eccentric)	½" to 24"	Sch : 10,20,40,80	½" to 4"	Sch : 10,20,40,80

WELDED PRODUCT RANGE

Product Type	FERROUS MATERIAL		NON-FERROUS MATERIAL	
	Size Range	Schedule	Size Range	Schedule
Reducer (Concentric / Eccentric)	8" to 24"	Sch : 10,20,40,80	8" to 24"	Sch : 10,20,40,80

DIMENSIONS OF BUTTWELD REDUCER





DN / NPS (Inch)	NPS in MM	End to End Height (H) in MM
1/8	6	-
1/4	8	-
3/8	10	-
1/2	15	-
3/4	20	38
1	25	51
1 1/4	32	51
1 1/2	40	64
2	50	76
2 1/2	65	89
3	80	89
3 1/2	90	102
4	100	102
5	125	127
6	150	140
8	200	152
10	250	178
12	300	203
14	350	330
16	400	356
18	450	381
20	500	508
22	550	508
24	600	508
26	650	610
28	700	610
30	750	610
32	800	610
34	850	610
36	900	610
38	950	610
40	1000	610
42	1050	610
44	1100	610
46	1150	711
48	1200	711

REDUCER MATERIAL GRADES

Material	Grades
Stainless Steel	ASTM A403 WP Gr. 304, 304L, 304H, 309, 310, 316, 316L, 316Ti, 317L, 321, 347, 347H, 904L
Carbon Steel	ASTM A 234 WPB, WPBW, WPHY 42, WPHY 46, WPHY 52, WPH 60, WPHY 65 & WPHY 70.
Low Temperature Carbon Steel	ASTM A420 WPL3, A420 WPL6
Alloy Steel	ASTM / ASME A/SA 234 Gr. WP 1, WP 5, WP 9, WP 11, WP 12, WP 22, WP 91
Duplex Steel	ASTM A815, ASME SA 815 UNS S31803, UNS S32205(Dual Certified).
Super Duplex	ASTM A815, ASME SA 815 UNS S32750, UNS S32760

Super Duplex Steel	ASTM A286, ASTM A287, ASTM A289, ASTM A290, ASTM A292, ASTM A298, ASTM A301, ASTM A304, ASTM A308, ASTM A312, ASTM A314, ASTM A315, ASTM A316, ASTM A317, ASTM A320, ASTM A321, ASTM A323, ASTM A325, ASTM A327, ASTM A329, ASTM A330, ASTM A333, ASTM A334, ASTM A335, ASTM A336, ASTM A337, ASTM A338, ASTM A339, ASTM A340, ASTM A347, ASTM A348, ASTM A349, ASTM A350, ASTM A351, ASTM A352, ASTM A353, ASTM A354, ASTM A355, ASTM A356, ASTM A357, ASTM A358, ASTM A359, ASTM A360, ASTM A361, ASTM A362, ASTM A363, ASTM A364, ASTM A365, ASTM A366, ASTM A367, ASTM A368, ASTM A369, ASTM A370, ASTM A371, ASTM A372, ASTM A373, ASTM A374, ASTM A375, ASTM A376, ASTM A377, ASTM A378, ASTM A379, ASTM A380, ASTM A381, ASTM A382, ASTM A383, ASTM A384, ASTM A385, ASTM A386, ASTM A387, ASTM A388, ASTM A389, ASTM A390, ASTM A391, ASTM A392, ASTM A393, ASTM A394, ASTM A395, ASTM A396, ASTM A397, ASTM A398, ASTM A399, ASTM A400, ASTM A401, ASTM A402, ASTM A403, ASTM A404, ASTM A405, ASTM A406, ASTM A407, ASTM A408, ASTM A409, ASTM A410, ASTM A411, ASTM A412, ASTM A413, ASTM A414, ASTM A415, ASTM A416, ASTM A417, ASTM A418, ASTM A419, ASTM A420, ASTM A421, ASTM A422, ASTM A423, ASTM A424, ASTM A425, ASTM A426, ASTM A427, ASTM A428, ASTM A429, ASTM A430, ASTM A431, ASTM A432, ASTM A433, ASTM A434, ASTM A435, ASTM A436, ASTM A437, ASTM A438, ASTM A439, ASTM A440, ASTM A441, ASTM A442, ASTM A443, ASTM A444, ASTM A445, ASTM A446, ASTM A447, ASTM A448, ASTM A449, ASTM A450, ASTM A451, ASTM A452, ASTM A453, ASTM A454, ASTM A455, ASTM A456, ASTM A457, ASTM A458, ASTM A459, ASTM A460, ASTM A461, ASTM A462, ASTM A463, ASTM A464, ASTM A465, ASTM A466, ASTM A467, ASTM A468, ASTM A469, ASTM A470, ASTM A471, ASTM A472, ASTM A473, ASTM A474, ASTM A475, ASTM A476, ASTM A477, ASTM A478, ASTM A479, ASTM A480, ASTM A481, ASTM A482, ASTM A483, ASTM A484, ASTM A485, ASTM A486, ASTM A487, ASTM A488, ASTM A489, ASTM A490, ASTM A491, ASTM A492, ASTM A493, ASTM A494, ASTM A495, ASTM A496, ASTM A497, ASTM A498, ASTM A499, ASTM A500, ASTM A501, ASTM A502, ASTM A503, ASTM A504, ASTM A505, ASTM A506, ASTM A507, ASTM A508, ASTM A509, ASTM A510, ASTM A511, ASTM A512, ASTM A513, ASTM A514, ASTM A515, ASTM A516, ASTM A517, ASTM A518, ASTM A519, ASTM A520, ASTM A521, ASTM A522, ASTM A523, ASTM A524, ASTM A525, ASTM A526, ASTM A527, ASTM A528, ASTM A529, ASTM A530, ASTM A531, ASTM A532, ASTM A533, ASTM A534, ASTM A535, ASTM A536, ASTM A537, ASTM A538, ASTM A539, ASTM A540, ASTM A541, ASTM A542, ASTM A543, ASTM A544, ASTM A545, ASTM A546, ASTM A547, ASTM A548, ASTM A549, ASTM A550, ASTM A551, ASTM A552, ASTM A553, ASTM A554, ASTM A555, ASTM A556, ASTM A557, ASTM A558, ASTM A559, ASTM A560, ASTM A561, ASTM A562, ASTM A563, ASTM A564, ASTM A565, ASTM A566, ASTM A567, ASTM A568, ASTM A569, ASTM A570, ASTM A571, ASTM A572, ASTM A573, ASTM A574, ASTM A575, ASTM A576, ASTM A577, ASTM A578, ASTM A579, ASTM A580, ASTM A581, ASTM A582, ASTM A583, ASTM A584, ASTM A585, ASTM A586, ASTM A587, ASTM A588, ASTM A589, ASTM A590, ASTM A591, ASTM A592, ASTM A593, ASTM A594, ASTM A595, ASTM A596, ASTM A597, ASTM A598, ASTM A599, ASTM A600, ASTM A601, ASTM A602, ASTM A603, ASTM A604, ASTM A605, ASTM A606, ASTM A607, ASTM A608, ASTM A609, ASTM A610, ASTM A611, ASTM A612, ASTM A613, ASTM A614, ASTM A615, ASTM A616, ASTM A617, ASTM A618, ASTM A619, ASTM A620, ASTM A621, ASTM A622, ASTM A623, ASTM A624, ASTM A625, ASTM A626, ASTM A627, ASTM A628, ASTM A629, ASTM A630, ASTM A631, ASTM A632, ASTM A633, ASTM A634, ASTM A635, ASTM A636, ASTM A637, ASTM A638, ASTM A639, ASTM A640, ASTM A641, ASTM A642, ASTM A643, ASTM A644, ASTM A645, ASTM A646, ASTM A647, ASTM A648, ASTM A649, ASTM A650, ASTM A651, ASTM A652, ASTM A653, ASTM A654, ASTM A655, ASTM A656, ASTM A657, ASTM A658, ASTM A659, ASTM A660, ASTM A661, ASTM A662, ASTM A663, ASTM A664, ASTM A665, ASTM A666, ASTM A667, ASTM A668, ASTM A669, ASTM A670, ASTM A671, ASTM A672, ASTM A673, ASTM A674, ASTM A675, ASTM A676, ASTM A677, ASTM A678, ASTM A679, ASTM A680, ASTM A681, ASTM A682, ASTM A683, ASTM A684, ASTM A685, ASTM A686, ASTM A687, ASTM A688, ASTM A689, ASTM A690, ASTM A691, ASTM A692, ASTM A693, ASTM A694, ASTM A695, ASTM A696, ASTM A697, ASTM A698, ASTM A699, ASTM A700, ASTM A701, ASTM A702, ASTM A703, ASTM A704, ASTM A705, ASTM A706, ASTM A707, ASTM A708, ASTM A709, ASTM A710, ASTM A711, ASTM A712, ASTM A713, ASTM A714, ASTM A715, ASTM A716, ASTM A717, ASTM A718, ASTM A719, ASTM A720, ASTM A721, ASTM A722, ASTM A723, ASTM A724, ASTM A725, ASTM A726, ASTM A727, ASTM A728, ASTM A729, ASTM A730, ASTM A731, ASTM A732, ASTM A733, ASTM A734, ASTM A735, ASTM A736, ASTM A737, ASTM A738, ASTM A739, ASTM A740, ASTM A741, ASTM A742, ASTM A743, ASTM A744, ASTM A745, ASTM A746, ASTM A747, ASTM A748, ASTM A749, ASTM A750, ASTM A751, ASTM A752, ASTM A753, ASTM A754, ASTM A755, ASTM A756, ASTM A757, ASTM A758, ASTM A759, ASTM A760, ASTM A761, ASTM A762, ASTM A763, ASTM A764, ASTM A765, ASTM A766, ASTM A767, ASTM A768, ASTM A769, ASTM A770, ASTM A771, ASTM A772, ASTM A773, ASTM A774, ASTM A775, ASTM A776, ASTM A777, ASTM A778, ASTM A779, ASTM A780, ASTM A781, ASTM A782, ASTM A783, ASTM A784, ASTM A785, ASTM A786, ASTM A787, ASTM A788, ASTM A789, ASTM A790, ASTM A791, ASTM A792, ASTM A793, ASTM A794, ASTM A795, ASTM A796, ASTM A797, ASTM A798, ASTM A799, ASTM A800, ASTM A801, ASTM A802, ASTM A803, ASTM A804, ASTM A805, ASTM A806, ASTM A807, ASTM A808, ASTM A809, ASTM A810, ASTM A811, ASTM A812, ASTM A813, ASTM A814, ASTM A815, ASTM A816, ASTM A817, ASTM A818, ASTM A819, ASTM A820, ASTM A821, ASTM A822, ASTM A823, ASTM A824, ASTM A825, ASTM A826, ASTM A827, ASTM A828, ASTM A829, ASTM A830, ASTM A831, ASTM A832, ASTM A833, ASTM A834, ASTM A835, ASTM A836, ASTM A837, ASTM A838, ASTM A839, ASTM A840, ASTM A841, ASTM A842, ASTM A843, ASTM A844, ASTM A845, ASTM A846, ASTM A847, ASTM A848, ASTM A849, ASTM A850, ASTM A851, ASTM A852, ASTM A853, ASTM A854, ASTM A855, ASTM A856, ASTM A857, ASTM A858, ASTM A859, ASTM A860, ASTM A861, ASTM A862, ASTM A863, ASTM A864, ASTM A865, ASTM A866, ASTM A867, ASTM A868, ASTM A869, ASTM A870, ASTM A871, ASTM A872, ASTM A873, ASTM A874, ASTM A875, ASTM A876, ASTM A877, ASTM A878, ASTM A879, ASTM A880, ASTM A881, ASTM A882, ASTM A883, ASTM A884, ASTM A885, ASTM A886, ASTM A887, ASTM A888, ASTM A889, ASTM A890, ASTM A891, ASTM A892, ASTM A893, ASTM A894, ASTM A895, ASTM A896, ASTM A897, ASTM A898, ASTM A899, ASTM A900, ASTM A901, ASTM A902, ASTM A903, ASTM A904, ASTM A905, ASTM A906, ASTM A907, ASTM A908, ASTM A909, ASTM A910, ASTM A911, ASTM A912, ASTM A913, ASTM A914, ASTM A915, ASTM A916, ASTM A917, ASTM A918, ASTM A919, ASTM A920, ASTM A921, ASTM A922, ASTM A923, ASTM A924, ASTM A925, ASTM A926, ASTM A927, ASTM A928, ASTM A929, ASTM A930, ASTM A931, ASTM A932, ASTM A933, ASTM A934, ASTM A935, ASTM A936, ASTM A937, ASTM A938, ASTM A939, ASTM A940, ASTM A941, ASTM A942, ASTM A943, ASTM A944, ASTM A945, ASTM A946, ASTM A947, ASTM A948, ASTM A949, ASTM A950, ASTM A951, ASTM A952, ASTM A953, ASTM A954, ASTM A955, ASTM A956, ASTM A957, ASTM A958, ASTM A959, ASTM A960, ASTM A961, ASTM A962, ASTM A963, ASTM A964, ASTM A965, ASTM A966, ASTM A967, ASTM A968, ASTM A969, ASTM A970, ASTM A971, ASTM A972, ASTM A973, ASTM A974, ASTM A975, ASTM A976, ASTM A977, ASTM A978, ASTM A979, ASTM A980, ASTM A981, ASTM A982, ASTM A983, ASTM A984, ASTM A985, ASTM A986, ASTM A987, ASTM A988, ASTM A989, ASTM A990, ASTM A991, ASTM A992, ASTM A993, ASTM A994, ASTM A995, ASTM A996, ASTM A997, ASTM A998, ASTM A999, ASTM A1000
Nickel Alloy	ASTM / ASME SB 336 UNS 2200 (NICKEL 200), ASTM / ASME SB 363 , ASTM / ASME SB 366, UNS 2201 (NICKEL 201), UNS 4400 (MONEL 400), UNS 8020 (ALLOY 20 / 20 CB 3, UNS 8825 INCONEL (825), UNS 6600 (INCONEL 600), UNS 6601 (INCONEL 601), UNS 6625 (INCONEL 625), UNS 10276 (HASTELLOY C 276)

INDUSTRIES WE SERVE



FERTILIZER SECTOR



ENERGY SECTOR



MINING & STEEL SECTOR



SHIP BUILDING



EPC PROJECTS



PETROCHEMICAL



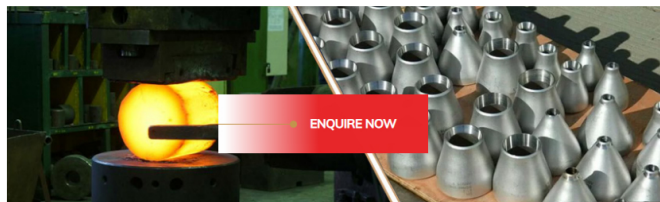
OIL & GAS



PHARMACEUTICAL



MARINE



CONTACT DETAIL

New Survey no 773/P1, Village :
Irana, Tal : Kadi, Rajpur - Indrad
Road, Dist : Mehsana -
382715(Gujarat), India.

Phone: +91 9820023412

Email: sales@jpipings.com

QUICK LINKS

- About Us
- Facilities
- Quality
- Gallery
- International Presence
- Join Us
- Contact

PRODUCTS

- Buttweld Fittings
- Forged Flanges
- Pre-Fabricated Piping Spools
- Other Products

MATERIALS

- Stainless Steel
- Carbon Steel
- Alloy Steel
- Duplex Steel
- Super Duplex Steel
- High Nickel Alloys

POPULAR TAGS

- 304 Stainless Steel Pipe Fittings
- Pipe Fittings Stainless Steel
- Flanges Stainless Steel
- Stainless Steel Flanges Manufacturer
- Pipe Fittings Manufacturer
- Monel 400 Flanges Manufacturer
- Duplex Steel Flanges Manufacturer
- Inconel Flanges Manufacturer
- Super Duplex Flanges Manufacturer
- Stainless Steel Buttweld Pipe Fittings
- Hastelloy Buttweld Pipe Fittings
- Flanges Manufacturer
- Stainless Steel Elbow Pipe
- Stainless Steel Nipples
- Manufacturer of Couplings Pipe